



ESSEX COUNTY  
BRANCH BROOK PARK

# Cherry Blossom Festival

April 5-13, 2025

## Festival Events

Saturday, April 5 ~ 7am-1pm  
**Cherry Blossom Bike Race**  
Oval, Northern Division

Sunday, April 6 ~ 10am start  
**Cherry Blossom 10k Run**  
Cherry Blossom Welcome Center Fields

Saturday, April 12 ~ 9am start  
**1-Mile Fun Run/Walk**  
Prudential Concert Grove, Southern Division

Saturday, April 12 ~ 11am-3pm  
**Essex County Family Day**  
Prudential Concert Grove, Southern Division

Sunday, April 13 ~ 11am-5pm  
**Bloomfest!**  
Oval, Northern Division

Visit our website for more  
details and information

[WWW. ESSEXCOUNTYNJ.ORG](http://WWW.ESSEXCOUNTYNJ.ORG)



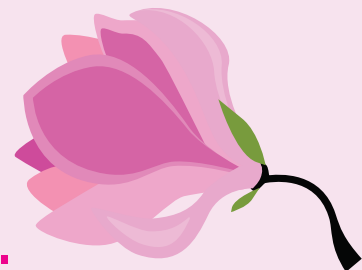
BRANCH  
BROOK  
PARK  
ALLIANCE

**RWJ**Barnabas  
HEALTH

PUTTING **ESSEX COUNTY** FIRST



You're  
Invited to...



Essex County Branch Brook Park to enjoy the most diverse collection of Cherry Blossom trees, even larger than the national display in Washington, DC. The blossoming trees create a picturesque setting that transforms the park into a stunning spring fantasyland. We invite you and your family to come out and experience this natural wonder.

**Joseph N. DiVincenzo, Jr.**  
*Essex County Executive*  
and the Board of County Commissioners

**Cherry Blossom Talks**  
April 2, 5, 9, 12, 16, 19, 23, 26, 30  
at Cherry Blossom Welcome Center, Extension

Join us every Wednesday and Saturday in April at 11 am for Cherry Blossom Talks! These 30-minute talks will discuss the history of cherry blossom trees in the United States, how cherry blossom trees grow, and the history of Branch Brook Park. Talks will be held at the Cherry Blossom Welcome Center. Enjoy the fresh air, beautiful scenery, and interesting topics.

**Guided Tours are Available!**  
Bring your group on a bus for a 45-minute journey through Branch Brook Park with a knowledgeable guide pointing out the history hidden in the Olmsted-designed park's structure and features, as well as the largest flowering cherry blossom collection in the United States. Contact [mmcfarlane@parks.essexcountynj.org](mailto:mmcfarlane@parks.essexcountynj.org) for more information.